



**WEST EXTERIOR ELEVATION**  
SCALE: 3/16" = 1'-0"

- FINISH LEGEND**
- 1 VERTICAL METAL WALL PANEL
  - 2 HORIZONTAL METAL WALL PANEL
  - 3 DECORATIVE CLADDING
  - 4 METAL ROOF PANEL
  - 5 STEEL ENTRY CANOPY SYSTEM
  - 6 EXPOSED WOOD ARBOR FRAMING
  - 7 CABLE RAIL SYSTEM WITH EXPOSED CONNECTORS
  - 8 ALUMINUM STOREFRONT ASSEMBLY

-  AEP SPAN  
"OLD TOWN GRAY"  
COOL DURA TECH 500
-  AEP SPAN  
"SLATE GRAY"  
COOL DURA TECH 500
-  DEKTON  
"KRETA"  
INDUSTRIAL COLLECTION
-  MATCH COLOR  
AEP SPAN  
"SLATE GRAY"
-  WOOD SIDING / FRAMING  
IPE  
WITH CLEAR FINISH

**PROJECT TEAM**

**OWNER:**  
ALPINE CLIMBING ADVENTURES FITNESS, LLC  
1450 GARRISON WAY  
RIPON, CA 95366  
PHONE: (209) 509-4277  
CONTACT: JONATHAN T. MEEK  
jonathan@climbalpine.com

**ARCHITECT:**  
API ARCHITECTURE PLUS, INC.  
4335-B NORTH STAR WAY  
MODESTO, CA 95356  
PHONE: (209) 577-4661  
FAX: (209) 577-0213  
CONTACT: JOSEPH SMITH  
joe@aplarc.com

**SHEET INDEX**

**ARCHITECTURAL:**

- A0 COVER SHEET / COLOR ELEVATION
- A1 SITE PLAN
- A2 FLOOR PLAN - FIRST FLOOR
- A3 FLOOR PLAN - SECOND FLOOR
- A4 ROOF PLAN
- A5 EXTERIOR ELEVATIONS
- A6 COLOR EXTERIOR ELEVATIONS

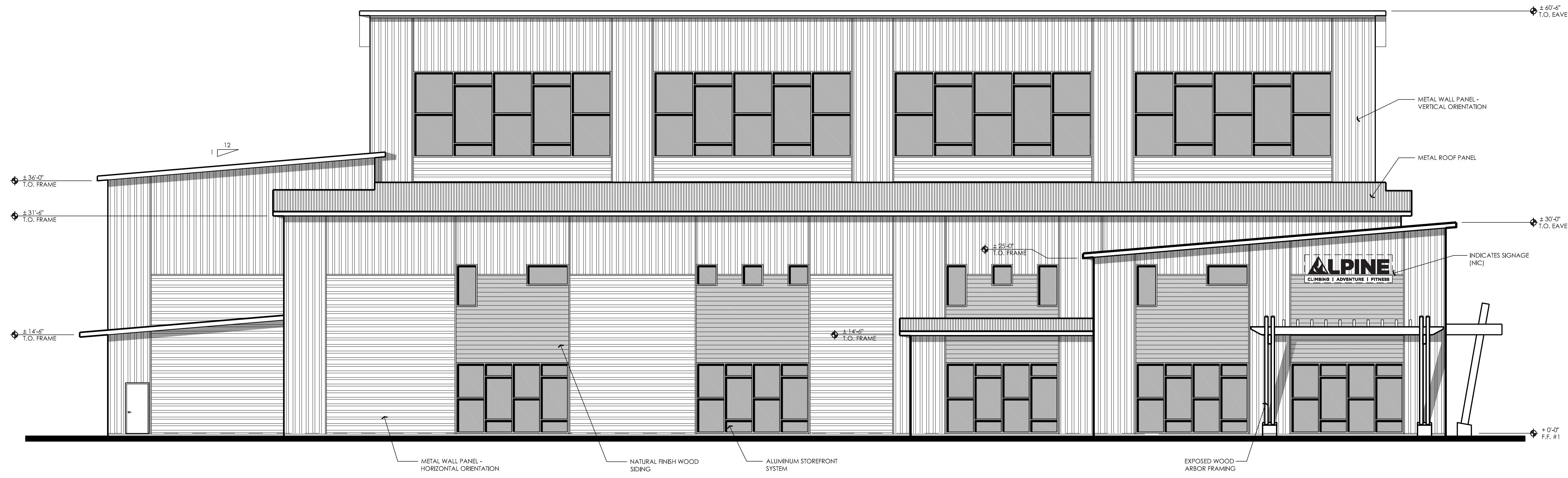
PROPOSED TENANT  
IMPROVEMENT:  
**ALPINE  
CLIMBING  
GYM II**  
1730 FREEDOM WAY  
ROSEVILLE, CA

PLANNING  
ARCHITECTURE

**api**

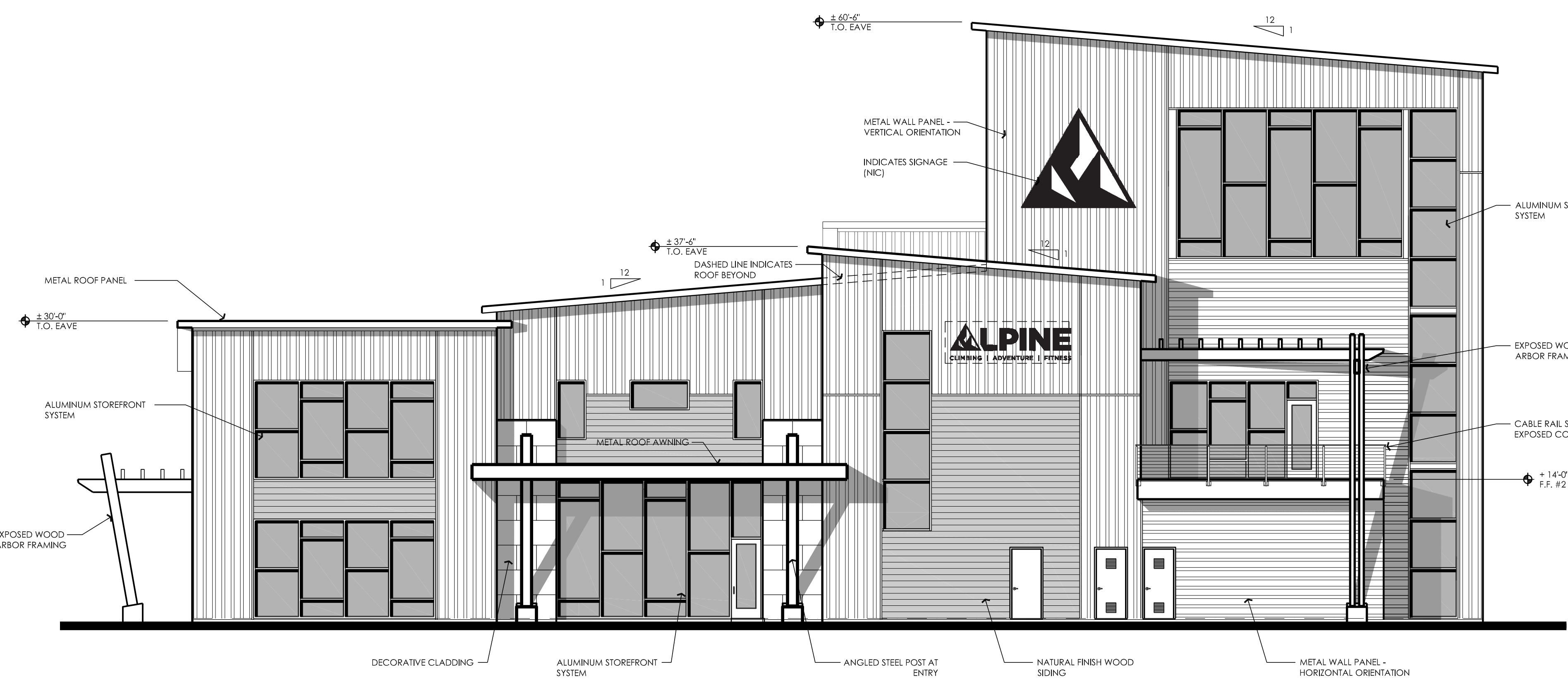
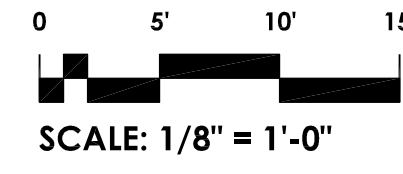
ARCHITECTURE PLUS INC.  
4335-B NORTH STAR WAY  
MODESTO, CA 95356  
ph. 209.577.4661  
fx. 209.577.0213  
www.aplarc.com

SHEET:  
**A0**  
OF 7



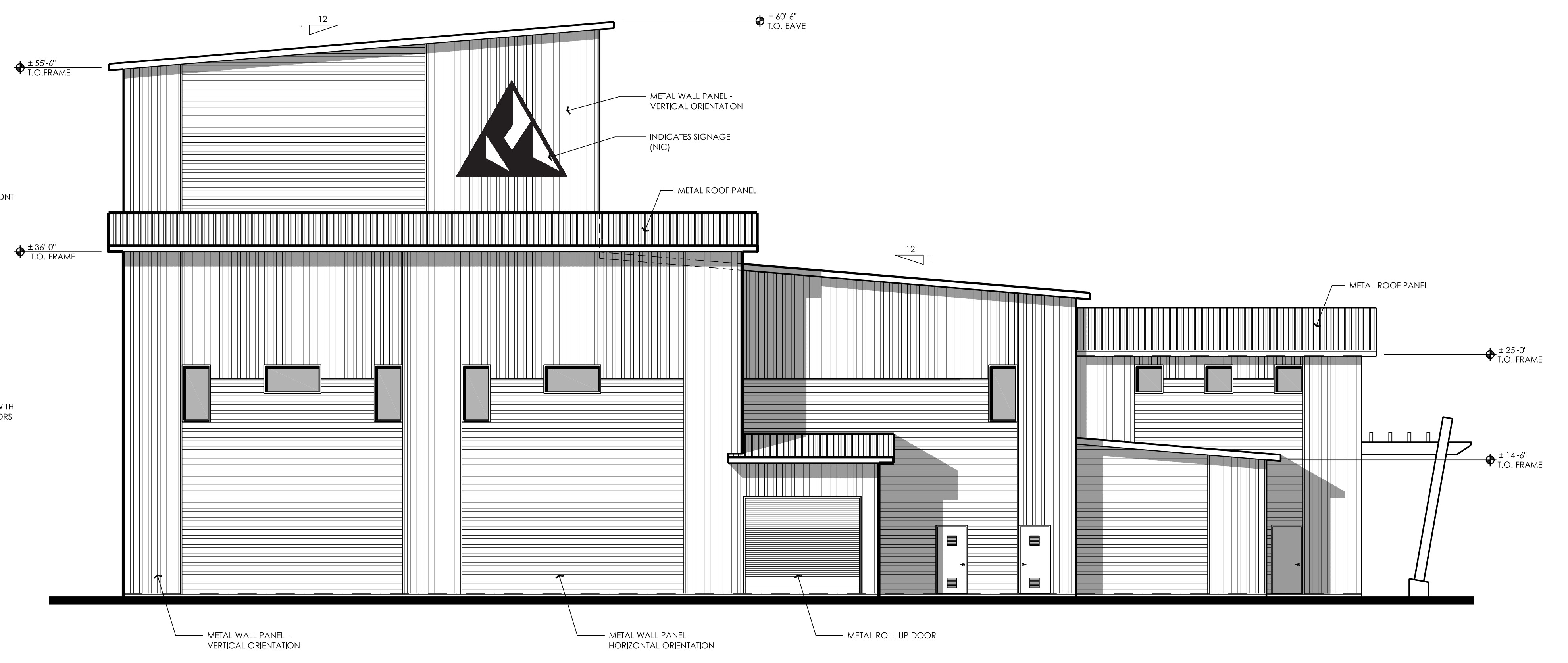
**NORTH EXTERIOR ELEVATION**

SCALE: 1/8" = 1'-0"



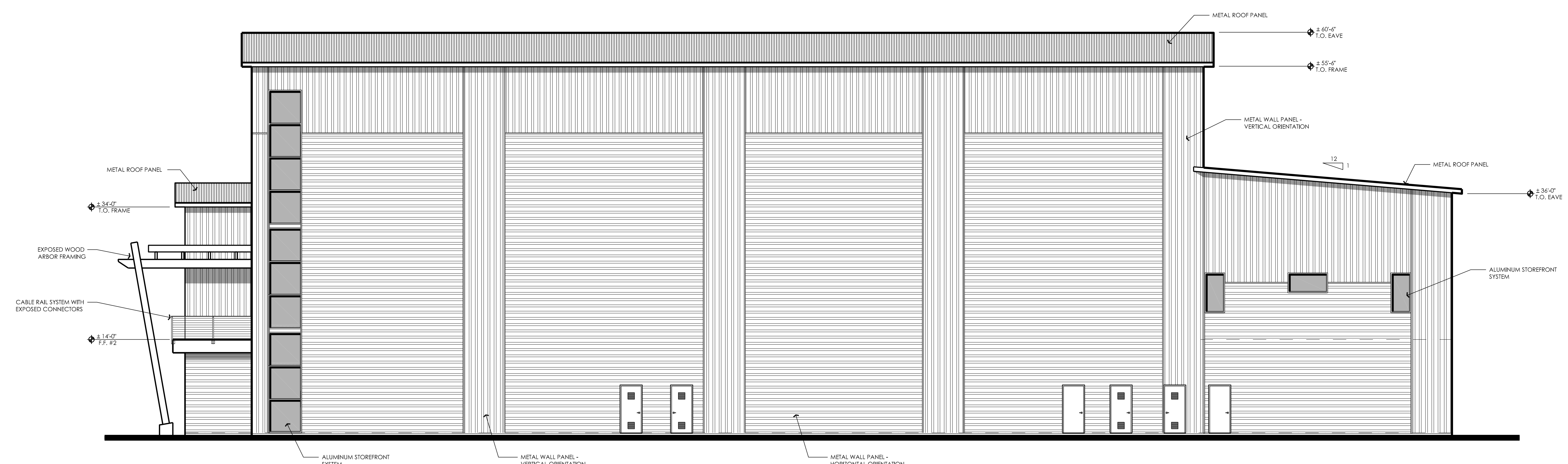
**WEST EXTERIOR ELEVATION**

SCALE: 1/8" = 1'-0"



**EAST EXTERIOR ELEVATION**

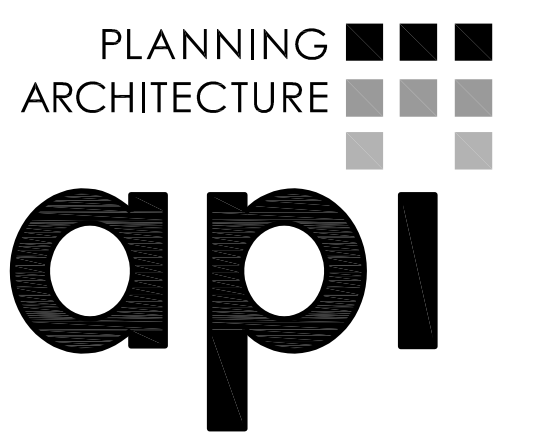
SCALE: 1/8" = 1'-0"



**SOUTH EXTERIOR ELEVATION**

SCALE: 1/8" = 1'-0"

PROPOSED TENANT  
IMPROVEMENT:  
**ALPINE  
CLIMBING  
GYM II**  
1730 FREEDOM WAY  
ROSEVILLE, CA



ARCHITECTURE PLUS INC.  
4335-B NORTH STAR WAY  
MODESTO, CA 95356

ph. 209.577.4661  
fx. 209.577.0213

www.apiarc.com

SHEET:

**A5**  
OF 7



**NORTH EXTERIOR ELEVATION**

SCALE: 1/8" = 1'-0"

0 5' 10' 15'  
SCALE: 1/8" = 1'-0"



**WEST EXTERIOR ELEVATION**

SCALE: 1/8" = 1'-0"



**EAST EXTERIOR ELEVATION**

SCALE: 1/8" = 1'-0"



**SOUTH EXTERIOR ELEVATION**

SCALE: 1/8" = 1'-0"

PROPOSED TENANT  
IMPROVEMENT:  
**ALPINE  
CLIMBING  
GYM II**  
1730 FREEDOM WAY  
ROSEVILLE, CA

PLANNING  
ARCHITECTURE  
**api**

ARCHITECTURE PLUS INC.  
4335-B NORTH STAR WAY  
MODESTO, CA 95356

ph. 209.577.4661  
fx. 209.577.0213

www.apirc.com

SHEET:

**A6**  
OF 7